



ILLINOIS STATE
UNIVERSITY
Illinois' first public university

PSY NEWS

DEPARTMENT OF PSYCHOLOGY

Summer 2013



Gary Creasey named top professor in Illinois

by Rachel Hatch, Media Relations

Illinois State University Psychology Professor Gary Creasey has been named the top professor in Illinois. The honor comes from the Carnegie Foundation for the Advancement of Teaching and the Council for Advancement and Support of Education, which choose one professor from each state to be honored as a U.S. Professor of the Year.



The announcement of Creasey as the Illinois Professor of the Year was made November 15 at a Capitol Hill ceremony in Washington, D.C.

"I am so proud to represent our university and the state of Illinois in accepting this award," Creasey said. "Illinois State University has many great instructors; there are many others at this university that are equally deserving of this honor."

Creasey is a professor in the Department of Psychology and the assistant director of the TEACHER+PLUS program at Illinois State. For the past several years, Creasey has dedicated himself to preparing education majors to work as teachers in the Chicago Public School system.

"This award is a reflection of Dr. Creasey's unwavering commitment to innovative and rigorous undergraduate teaching, as well as a reflection of Illinois State University's high academic standards, and promotion of teaching, scholarship and public service," Illinois State Provost Sheri Noren Everts said.

A graduate of Virginia Commonwealth University, Creasey joined the faculty at Illinois State in 1989. His research focuses on developmental psychology, with a specialization in adolescent development. During his time at Illinois State, Creasey has earned the Outstanding College Teacher Award in his division, the Provost's Faculty Excellence Initiative Award, and the Outstanding College Researcher Award (Senior Division). He has earned the Illinois State University Outstanding University Teaching Award and been named a State Farm Teaching Technology Fellow.

Creasey has played a vital role in the University's TEACHER+PLUS program, which helps generate teachers for urban and underserved areas with a grant from the U.S. Department of Education. Through TEACHER+PLUS, and funding from the Illinois State American Democracy Project, Creasey developed the CONNECT program (Civic Opportunities to Network Needs for Educational and Community Transformation). The program matches talented, but at-risk, middle school students in the Auburn Gresham, Little Village, and Albany Park neighborhoods in Chicago with successful teacher candidates from Illinois State for an intense mentoring program through school and community visits, Skype sessions, and

News from the chair

Esteemed alumni:

On behalf of faculty, staff, and students, let me say it is our distinct pleasure to keep in touch with you via the latest edition of *Psy News*.



As my fourth year as department chair comes to a close, I am delighted to report that we successfully completed our seven-year Illinois Board of Higher Education program review. In addition, our school psychology Ph.D. program

received accreditation from the American Psychological Association (APA) for another seven years!

In addition to program achievements, our faculty members continue to garner university acclaim. Alycia Hund received the Outstanding College Service Award. Dan Ispas received a University Research Initiative Award. Adena Meyers, Renée Tobin, and Corinne Zimmerman were promoted to full professor, and Steve Croker was promoted to associate professor with tenure. Congratulations to these faculty members for their impressive achievements.

Our students are also doing very well. During this past year, 17 school psychology students gave presentations at the annual meeting of the National Association of School Psychologists. We of course have many more student accomplishments. You can read about these in the individual program reports.

On another note, Karen Pfof retired last summer. Pfof came to Illinois State in 1981 as a staff psychologist at the Student Counseling Center. She joined the department faculty in 1985. Since then, she has served as a valued member of the department's clinical-counseling program. We thank her for her dedicated service and wish her the best in her retirement. Pfof continues to teach in the department.

Kathy Hoff resigned from her faculty position in the school psychology program in spring 2012. She

Continued from page 1

joined the department faculty in 2000 and made significant contributions to the department's research profile. Although no longer a tenure-track member of the department, Hoff still retains adjunct professor status and is able to work on research projects with students.

On a more somber note, Sarah Mohl passed away March 25, 2013. We hired Sarah as a staff member in June 2012. Although she worked in our department only for a brief period, her delightful presence will be sorely missed. Our hearts go out to her family and friends as they struggle through this most difficult of times.

In closing, it was a very busy, productive year in the department! We held our biggest Alumni Day dinner ever, with more than 100 faculty, students, and alumni coming together for dinner, memories, and fun. We truly appreciate all the support we receive from our alumni and we look forward to perhaps seeing you at our annual Homecoming Dinner on October 4, 2013.

Best,
J. Scott Jordan, Ph.D.
professor and chair
Department of Psychology

Psychology donor roll

We have tried to ensure accuracy. If your name has been omitted, misspelled, or incorrectly listed, please accept our apologies and contact the editor, Raz Steward, at rlstew2@ilstu.edu.

January 1, 2012–December 31, 2012

\$1,000 +

Cathy Baechle and D. Charles Van Hecke
Audrey J. Grupe
James and Patricia Johnson
Jerome and Linda Jordan
Mary Jane McCarthy
Monika and Roger Neale
Yuwadee Viriyangkura
Thomas Wicke

\$500–\$999

Lynn Ahlgrim-Delzell and Peter Delzell
David and Deborah Barone
Frederick and Mary Dornback
Gerald Ferris and Pamela Perrew
Hsuei Wei Tsai and Rebecca Wang
Connie and John White

\$250–\$499

James and Mary Antos
Jeffrey and Sharon Crowhurst
Luann and Ken Douglas
Jeffrey A Crowhurst DPM
James and Beth LeBreton
Dawn McBride and Jeffrey Wagman
Gregory and Mary-Margaret Simpson

Continued on page 3

Continued from page 1

a community enhancement project. A CONNECT Program has also been developed locally at Bloomington Junior High School.

Throughout his work with TEACHER+PLUS, Creasey remained dedicated to his classes and scholarly research. He is the author of numerous books and publications, including *Research Methods in Lifespan Development* and *Adolescent Development in Urban Communities*. Creasey has also authored chapters of popular books such as *The Child: An Encyclopedic Companion*, the *Handbook of Adult Development and Learning*, and the *Handbook of Relationship Initiation*. His research has appeared in such journals as the *Journal of Research on Adolescence*, *Psychological Inquiry*, and the *International Journal of the Scholarship of Teaching and Learning*.

The Autism Place: An Invaluable Service

by Steven Barcus

Despite a growing number of individuals being diagnosed with Autism Spectrum Disorders (ASD), there are few resources for treatment. Karla Doepke, associate professor of psychology,



has consequently made it her mission to treat children with ASD and train students to work with those affected by the disease.

The Center for Disease Control estimates that one in 88 children has some form of ASD. Few have the expertise and experience to treat the social, communication, and behavioral challenges caused by ASDs, and as a result many go untreated.

"Treatment is intensive," Doepke said.

"One of the difficulties with being able to provide treatment is that it takes a lot of resources. Until recently, few services were

reimbursable by insurance. The structure of the state also does not make it beneficial for practitioners to provide services."

Doepke is painfully aware of the treatment dilemmas that families face. She recalls a mother of an autistic child who was directed to Doepke while searching for someone to treat her son. Knowing how time consuming autism treatment is, Doepke was reluctant to take on the task without the necessary resources. Yet the mother insisted, and after numerous pleas, Doepke agreed to begin treating the child. Within a few weeks she was treating two other children. And the number continued to grow.

The need was so great that in 2001, Doepke directed the establishment of The Autism Place (TAP) at Illinois State University. Though initially staffed only by Doepke and three students, a grant received in 2004 from The Autism Program allowed Doepke to hire two graduate students to assist with treatment. In time more grants and a growing need justified a move to a larger facility with a larger staff.

Today Doepke and a regular team of eight graduate clinicians, 10 graduate students, 15 psychology students, and 30 undergraduate clinicians serve 85 children and families each week.

"It makes a lot of sense to offer treatment at a university because there are a lot of educational benefits of working with kids with autism," Doepke said. "Students studying psychology, special education, nursing, and speech and language pathology all receive an educational benefit from working with the children. And it provides a major benefit to the community."

Children at TAP are evaluated for levels of communication, socialization, and independent functioning. A program is developed to take them from where they are to the next level. That next level can vary greatly from individual to individual. Treatment can take place at the clinic or at the child's home, based on family needs, making it necessary for clinicians to adapt to each child.

"Students are excited at the beginning, but very quickly feel inadequate," Doepke said. "They quickly gain the skills to work with the children and then they love it. It is a whole new experience for most."

Sandy Clark agrees. A fourth year graduate student, she first experienced working with autistic children at TAP.

"It has been a good experience," Clark said. "But in the beginning it was baptism by fire."

Now with four years of experience at TAP, Clark has come to love working with the children. The job has transitioned from one of stress to fun.

TAP Graduate Clinician Coordinator Tom Mulderink also loves the work he does. He has been charged with administrative tasks such as scheduling, training graduate clinicians, intakes and assignments, and consultation outside of the clinic in homes and schools.

"Being able to train people and send them out to use that knowledge creates a wider reach," Mulderink said. He also relishes the opportunity to play with the children, bonding over action figures and shared interests such as Star Wars.

But the work isn't always easy.

"One of the more difficult things is helping parents deal with Autism," Mulderink said. "It requires a lot of empathy because I don't have the same experience. We work with the children for a few hours a week, but the parents are with them all of the time."

Families consequently have a great appreciation for the help they received through TAP. As a training site for students, families are not charged for treatment sessions. Receiving a service not widely available eases a burden on families. TAP coordinates with schools and other agencies, such as Easter Seals and Catholic Charities, to make sure the services offered complement rather than duplicate or compete.

Knowing the value of TAP, parents and families now work to provide financial support through Friends of TAP. The group raised funds so that even if grants and private funds that keep TAP open became unavailable, services can continue. Their work funded summer 2012 sessions and continues to enhance TAP.

The support of groups such as Friends of TAP and partnerships with other organizations in the community ensures that Doepke and her team can focus on what matters most—the children.

"Children with autism will surprise you," Doepke said. "They can make great progress. As much as we help them learn, they help us learn. I don't think there is a day that goes by that we don't learn something from them. I was reluctant to dive into autism service because it is so intensive. But it is the most fun thing I get to do. It makes my job at ISU exactly the way I would want it to be."

ALUMNI DAY 2012

Distinguished Alumni Award—Lifetime Career

by Glenn Reeder

Michael Coovert, M.S. '81, earned his master's degree in industrial and organizational psychology. He obtained his Ph.D. from Ohio State University, where he studied topics such as artificial intelligence and structural equation modeling.



Since then, Coovert has done important research on a wide variety of workplace issues, including stress and health at work. He has authored or edited three books and 25 book chapters, and has had many journal articles published. From 1998 to 2001, Coovert served as associate chair for the Department of Psychology at the University of South Florida, where he also founded the Institute for Human Performance, Decision Making, and Cybernetics.

Coovert has received many awards in his career, with the most recent being the Presidential Excellence Award from the University of South Florida. He is a fellow of the Association for

Continued from page 2

Nancy and Stephen Siwiec
Sharon Swanson

\$100–\$249

Larry A. and Laura R. Alferink
Alma Arnone
Janet and Paul Bailey
Jennifer and Wayne Baumberger
Thomas and Anne Berghausen
Timothy and Karen Bruce
Shannon Chrismore
Debra Eisenberg
Cheryl and Michael Elenz
Robert Elias
Lisa Evoy
Fun Faces & Happy Times
Gayle and Ira Gerson
Carol Gomien
Richard Haig
John and Linda Hamilton
Curtis and Christine Haussmann
Carl and Lisa Hinshaw
Michael and Becky Hoag
Max and Irene Honn
Teri and Walcott Hunter
Donald and Marilyn Kammler
Ming-Gon John Lian
Mary Lee and John Lockwood
Barbara Marsh
Ted and Virginia Moody
Rivka Olley
V. Arthur and Carol Owles
Thomas and Julie Oyan
Sudhir Pai
Bonnie Peters
Nancy and Richard Peterson
Greg and Sheila Robinson
Russell A. Barkley PHD LLC
Charles and Janet Sherburne
Doug Smith
Margaret and Mark Swerdlik
Steven and Marcia Terrill
Mary and Eric Wiant

\$1–\$99

Anonymous (2)
Cindy Abbott
Anna Adamik
Roger and Tonya Alberico
Chinna Balachandran
Uthamalingam and Nagajayanthi Balachandran
William Ballad
Brian and Aimee Beam
Gary and Cheryl Behrens
Harold and Mary Berjohn
Evaleen and David Bertsche
Martin and Janelle Bohan
Stephanie and Bradley Brakebill
David and Rachel Brown
Kevin and Michelle Bruzan
Alejandro Camargo
Craig and Kristen Cartland

Continued on page 4

Continued on page 4

Continued from page 3

Lou Connor
Christopher and Debbie Cotter
Chrissy and Shane Crain
Michael and Mary Dehner
Dale and Teresa Dickson
Brandy and James Elmore
Mark Fauble and Barbi Smyser Fauble
Zachery Fiduccia
Lisa Fix-Griffin and Victor Griffin
Mirinda and Arthur Frealy
B.J. Friedman
Diamando Giba
Chad and Kerianne Guth
Randel and Elizabeth Hayson
Matthew Hesson-McInnis
Anna Hickey
Donnell and Andrew Hoeniges
Alvin House
Madalyn and Gregory Kalning
Kathryn and Daniel Kelley
Kimberely and James Krowlek
Heather Lacey
Richard and Mary Lavender
Karen and Ronald Long
Christopher Lubawski
Wing and Cheryl Lum
Byron Lytle
Eileen Matluck
Elaine Meils
Robert and Christine Meskimen
Ellen Miller-Germaine and Richard Germaine
Sharon LaEace Mills
National Association for Humor Impaired
Carol and Van Naylor
Kevin O'Brien
Lisa and Michael Phillips
Walter and Jean Prior
Marla Reese-Weber and John Weber
Sheryl and David Roberts
Donna and Jeff Schlatter
William Schneider
Thomas Schumacher
Karen and James Seefeldt
Charles and Joan Sherman
Jon and Sharon Siman
Dale and Judy Simonson
Barbi Smyser-Fauble
Stacey Stark-Pellettiere and Anthony Pellettiere
Gregg Stockey and Bonnie Collins
Kathleen and Michael Stuhr
Kent and Ann Terry
Nancy Thomas
James Thompson and Aprile O'Keefe-Thompson
Renee Tobin
Joseph and Carrie Tuma
Lucille Vaughn
Christopher Wagenknecht
Michael and Stephanie Walling
Catherine Warfield
Philip Webb and Cathy Freitag-Webb
Christina Wells
Julia and David White
Sherry Williams

Continued from page 3

Psychological Science, the Society for Industrial and Organizational Psychology, and the American Psychological Association, and a trustee for the Society of Multivariate Experimental Psychology.

Distinguished Alumni Award—Early Career

by Jeffrey Kahn

Steven Miller, M.S. '00, received his master's degree in clinical psychology at Illinois State, where he did his thesis under the direction of Sam Catanzaro. After graduating,



Miller attended Loyola University Chicago where he received an M.S. in probability and statistics as well as his Ph.D. in social psychology.

Miller is an assistant professor of clinical psychology at Argosy University in Chicago. So far in his career, Miller has produced 20 peer-reviewed publications, given many conference presentations, and been the recipient of several research grants. In 2011, he received the Emerging Scholar Award from Argosy University. Miller has contributed greatly to promoting excellence in quantitative methods applied to psychological science, through teaching, statistical consultation efforts, and the supervision of numerous graduate students.

Practicum Supervisor Award

by Mark Swerdlik

Brian Corley received his M.S. in school psychology from Northern Illinois University in 1986 and accepted initial employment at the Baby Fold in Normal.



In 1998 Corley began working as a school psychologist in Bloomington School District 87, serving Stevenson and Oakland elementary schools in Bloomington. Through Corley's effective collaboration, Stevenson Elementary has been a "model school" in the implementation of Response to Intervention (RTI), an initiative that expands the role of a school psychologist to a data-based decision maker who is involved in assessment and intervention decision-making at all levels of the school system.

As a practicum supervisor, Corley takes his role in educating the next generation of school psychologists very seriously and is supportive of his students, as well as an effective modeler. Corley also contributes to the school psychology program by serving as a guest speaker in a number of graduate classes each year and as a member of the Community Advisory Committee.

CLINICAL-COUNSELING PSYCHOLOGY

by Karen Mark

Thirty students are enrolled in the clinical-counseling psychology program, and the program continues to receive applications from strong individuals with diverse experiences and backgrounds. The 12 students admitted for fall 2012 joined us from a variety of undergraduate institutions: Illinois State University, Illinois College, Southern Illinois University-Edwardsville, Truman State University (Missouri), Morningside College (Iowa), Winthrop University (South Carolina), Boston University (Massachusetts), and the Mississippi University for Women. Welcome to the newest cohort!

Among the 12 students admitted for fall 2012 was Christine Bowles, who received a McNair Book Scholarship for the 2012–2013 academic year. Only up to five of these scholarships are awarded to incoming graduate students each year by the Illinois State University Graduate School. Bowles was eligible for this award through her participation at Truman State University as an undergraduate in the Ronald E. McNair Postbaccalaureate Achievement Program.

Alumni updates

In December 2012, Mark Copertino '09, M.S. '12, graduated from the program. He works as a therapist at Central DuPage Hospital in Winfield.

The program proudly welcomes Copertino to the growing list of clinical-counseling alums and wishes them success as they continue their professional pursuits. To date, 127 students have graduated from the clinical-counseling psychology program!

Sara Duffy '07, M.S. '11, continues to work at St. Mary of Nazareth Medical Center in Chicago. She was promoted from her position as a mental health counselor and now serves as a group counselor for the four behavioral health units in the hospital.

Amanda Kearney-Smith, M.S. '04, is director of consumer programs at Mental Health America in Denver.

Diana Saccomanno '09, M.S. '11, works as a clinical supervisor at the Pioneer Center for Human Services in Palatine.

Teresa Young '09, M.S. '11, got married in October 2011 and is a doctoral student in the counseling psychology program at Tennessee State University in Nashville.

APA convention news

There was much clinical-counseling activity in August 2012 at the American Psychological Association (APA) Convention in Orlando, as several students, alumni, and faculty presented posters:

Lauren Young, M.S. '12, and Margie Nauta—"Sexism as a Predictor of Attitudes Toward Women in Combat." (Based on Young's master's thesis.)

Karen Pfost, Matthew Hesson-McInnis, Young, and Samantha Kalmar (second-year student)—"Coping and Other predictors of Bulimia Nervosa and Feminism as Buffer."

Erica Behrens, M.S. '11, (co-authored with several University of Iowa colleagues) —"High Ability Youth With Autism Spectrum Disorders."

Angela Garrison, '07, M.A. '09, Jeffrey Kahn, and E.M. Sauer—"Emotional Avoidance and Rumination Mediate the Relation Between Adult Attachment and Disclosure."

Behrens, Garrison, and Young received 2012 American Psychological Association Travel Awards to support their travel to the APA Convention to present their research.

Also at the APA Convention, Garrison received the Barbara A. Kirk Award for outstanding student-initiated research. This is the highest research award granted by APA's Division 17 to counseling psychology graduate students. Garrison is a doctoral student in the Counselor Education and Counseling Psychology Department at Western Michigan University. Congratulations on this achievement, Angela!

Student news: Community agencies provide training sites for students

We continue to be grateful for our strong partnerships with community agencies that provide valuable training practica for second-year clinical-counseling students. In 2012-2013, we established a new practicum site at The Children's Center in Springfield, a division of Mental Health Centers of Central Illinois.

This year we also were delighted to have continued placements at the agencies where other students are currently completing their practica: The Baby Fold, The Center for Youth and Family Solutions (formerly Catholic Charities), Chestnut Health Systems, DeWitt County Human Resource Center, Heritage Behavioral Health Center, Institute for Human Resources, and the adult services division of Mental Health Centers of Central Illinois in Springfield. In addition, five of the 12 first-year clinical-counseling students are completing pre-practicum internships at The Center for Youth and Family Solutions, Chestnut Global Partners, and Chestnut Health Systems. We appreciate the contributions of all of these agencies in providing valuable clinical experiences and graduate assistantships for students in our program.

Don't miss Alumni Day 2013

October 4, 2013

For more information about Alumni Day events, visit Psychology.IllinoisState.edu/Alumni. We hope to see you there!

Keep in touch!

Help update our database by mailing information to the editor, Raz Steward, at Illinois State University, Department of Psychology, Campus Box 4620, Normal, IL 61790-4620; email, PSYAlumni@IllinoisState.edu; or fax (309) 438-5789.

Name

Program

Year graduated

Mailing address

City

State

ZIP

Occupational title

Email

Additional information

Faculty updates

Congratulations to Associate Professor Emerita Karen Pfost, who retired from Illinois State in June 2012.



During her 30-year tenure at the University, she taught such courses as Psychology of Women, Psychopathology, Senior Seminar, Substance Abuse Counseling, and Practicum in Counseling Psychology. Although she officially retired from the University, Pfost continues to supervise

undergraduate and graduate students on research projects, and she has been teaching courses in the spring and summer semesters. In October 2012 Pfost welcomed the arrival of her first grandchild, Maya, born to daughter Rachel Pfost-Stevens. Maya also is the granddaughter of Michael Stevens. Both Pfost and Stevens are enjoying their new roles as doting grandparents.

Congratulations to Associate Professor Joel Schneider, who was granted a well-earned sab-



batical for the spring 2013 semester. He is writing a book tentatively titled *A Psychometric Toolkit for Psychological Evaluations: How to Answer Questions You Didn't Know You Could Ask*. This book will be bundled with software that will help psychologists use psychological assessment

data more effectively. We commend Schneider as he begins this exciting project, and we look forward to hearing further details when he returns in fall 2013.

Clinical-counseling graduate students provide services to adults at the Marzolf Center

by Brenda Huber

Over the past three years, under the supervision of Professor Alvin House, a new training opportunity has been afforded to master's students in the clinical-counseling sequence.

Graduate students have been offering a skills training group, a component of the evidence-based dialectical behavioral therapy approach, with adults who have been referred by their own individual therapists in the community. The curriculum increases clients' skills in five areas: mindfulness, interpersonal skills and conflict management, emotion regulation, distress tolerance, and values and goals for building a life worth living.

Traditionally, services at the Psychological Services Center (PSC), officially the Stanley S. Marzolf Center for the Psychological Assessment and Treatment of Children and Adolescents at Illinois State University, have been offered to children, adolescents, their parents, and college students. The addition of this opportunity has opened the door to serving consumers across the lifespan. The PSC provides clinical training opportunities for more than 30 students in the Department of Psychology each year; operating funds for the PSC come from fees collected for assessment, intervention, and consultation services provided on-site as well as through external contracts.

SCHOOL PSYCHOLOGY

by Mark Swerdlik

Current enrollment is 54 students in the specialist and Ph.D. programs. Last fall seven students entered the specialist program and five entered the doctoral program.

Alumni return for Homecoming event

Several alumni returned to campus during Homecoming 2012 to talk with current specialist and doctoral students. This distinguished group of alumni spanned more than 30 years



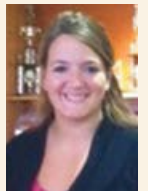
of the school psychology program, representing the Ph.D., specialist, and master's degree programs, as well as career paths that included working in a variety of settings such as independent practice, administration, and school-based practice. These alumni were Kerry Burd, M.S. '85; Amir Jacob '11; Kristin Miller '10; Eric Pierson, Ph.D. '07; Brian Spicer '06; and Debbie Izzo Trout, M.S. '82.

10th Audrey J. Grupe Fellow in School Psychology selected

Last year marked a special milestone in the awarding of the Audrey J. Grupe Fellowship in School Psychology when Katelyn (Katie) Probst '12 was named the 10th recipient of the fellowship. Probst, of Wheeler, was a first-year student in the specialist program.

A celebration was held to mark a decade of Grupe Fellows and included many past recipients returning to campus on Alumni Day. The past Grupe Fellows are Brian Spicer '06, Jennifer Wierzbicki '07, Claire Delahunt '08, Rebecca Skupien '09, Kristin Miller '10, Amir Jacob '11, Alison Tomchik '12, Allison Hanna, and Sara Rubin.

The fellowship includes a full tuition waiver and a monthly stipend. The Department of Psychology would like to thank Audrey Grupe '51 and fellowship co-founder Mary Jane McCarthy for funding the fellowship and contributing to future generations of school psychologists.



Katie Probst

Doctoral-level school psychologists: Meeting the needs of Illinois school children

by Brenda Huber

Meeting the academic and social-emotional needs of school children in Illinois, especially in the face of persistent and aggressive budget cuts, is an increasingly difficult task. School psychologists engage in rigorous training to meet these needs, but they continue to be the most under-produced educational professionals in the state, leaving 160 positions vacant last year.

Since 2002, The Illinois School Psychology Internship Consortium (ISPIC) has provided a doctoral internship to 153 of the nation's best and brightest to meet this challenge. These trainees have come from 40 different universities with 47 percent matriculating from the four Illinois doctoral programs: Illinois State University, Loyola University Chicago, National Louis University, and Northern Illinois University). Approximately 65 percent of those completing ISPIC internships continue to live and work in Illinois, helping partially to deal with the shortage for school psychologists in the state.

ISPIC has been accredited by the American Psychological Association since 2005 and has a national reputation for quality training that has enabled it to draw talent to Illinois. This year, the program experienced a 30 percent increase in the number of applications for the 2013–2014 training year. Operating expenses are sustained entirely by soft money, and contributions from alumni and colleagues are greatly appreciated.

Doctoral program receives APA accreditation for seven years

As a result of last year's American Psychological Association (APA) reaccreditation review, which included a comprehensive self-site and two-day site visit, we are pleased to announce that our Ph.D. program in school psychology has been accredited for the maximum seven years. We appreciate the time and effort of all alumni who completed surveys that were conducted in conjunction with our self-study. We also appreciate alumni responding promptly to our requests for information as part of our mandated annual report to APA. Thank you!

Alumni/student updates

Julie Herbstrith, Ph.D. '10, an assistant professor in the school psychology program at Western Illinois University, now serves as the trainer representative to the Illinois School Psychologist Association Governing Board.

Congratulations to Kate Gioia '05, Ph.D. '10, who won the universitywide competition for the prestigious Sorenson Outstanding Dissertation Award presented by the Illinois State University Graduate School. Gioia is our fourth Ph.D. graduate and second consecutive one to win this all-university dissertation award. Congratulations to Kate on this award and also on her recent marriage!

A number of potential future psychologists were brought into the world since our last newsletter. Congratulations to Mandi Martinez-Dick and Silas Dick, current Ph.D. students, on the birth of their baby boy, Ezra; Rachel Miller Minelli, Ph.D. '12, and Jennifer Wierzbicki Leverentz '07, who each celebrated the birth of their firstborn; Claire Delahunt '08 on the birth of her second child; and Beth Casper '99, Ph.D. '10, on the birth of her fourth child this past year.

Congratulations to Department of Psychology alums Tom Mulderink, M.S. '12, and Erica Ranade, M.S. '12, who got married last summer.

Congratulations also to Brenda Huber '89, Ph.D. '02, who was honored in May 2012 by the Illinois School Psychology Internship Consortium (ISPIC) for a decade of dedicated service to ISPIC in her role of as training director.

Mary Padagm Wurster '06, a graduate of our specialist degree program in school psychology, received the 2013 Ted Smith Practitioner of the Year Award, which recognizes the

Faculty accomplishments

Congratulations to Professors Renée Tobin and Adena Meyers on their promotion to full professor. We congratulate Meyers and Tobin on their well-deserved recognition.



Renée Tobin



Adena Meyers

Continued on page 8

Faculty accomplishments

Associate Professor Steve Croker was awarded tenure and promoted to associate professor. Croker was



awarded a \$5,000 grant from the University Research Grants Programs for "Compensatory Health Beliefs and Reasoning About Food and Exercise."

Professor Corinne Zimmerman was promoted to full professor. Zimmerman was awarded a \$3,000 University Research Grant for "The Interpretation of Research Evidence by Pre-service and In-service Teachers: Effects of Research Characteristics and Prior Beliefs."



Continued from page 7

Illinois School Psychologists Association member who is most outstanding in the practice of school psychology. Wurster was recognized for her professionalism, dedication, knowledge, and commitment to provide the best services for her school and the district.

We said good-bye to Kathy Hoff this past summer. Hoff moved with her family to Naperville, and the drive became too much of a challenge for her to continue as a member of our full-time faculty. We appreciate her many contributions as a faculty mentor to students enrolled in our specialist and doctoral programs in school psychology and as our colleague for many years.

Passages

Congratulations to our recent graduates of our Ph.D. program—Dan Gadke, Ashley Whittington Barish, Katie Hartmann, Trisha Mann, and Mandi Martinez-Dick—and to Arpita Bavishi, Liz Babcock Grose, Brenda Cichon Obilade, Jackie Macklin, Lewis Mazzone, Jordan Spencer, Alison Tomchik, and Chris Zielinski, who earned their specialist degrees in school psychology last year. We are very pleased that all of our specialist and Ph.D. graduates have secured employment for the 2012–13 school year.

DEVELOPMENTAL PSYCHOLOGY

by Corinne Zimmerman

Our current program comprises Mayuko Nakamura, a first-year part time student, and four second-year graduate students: Nicole Hilaire, Heather Hyman, Martin Gallegos, and Christopher Marosi.

Alumni updates

Allison Bock, M.S., '09, started the doctoral program in applied developmental psychology at George Mason University in the fall 2012.



Graduate students, 2011–2012. From left to right: Christopher Marosi, Nicole Hilaire, Heather Hyman, Martin Gallegos, and Angie Calvin

Lisa Sweas Hurley '05, M.S. '07, is teaching a section of PSY 302: Adolescent Development in the spring semester.

Jennifer (Bivens) Oliver '86, M.S. '88, was the 2012 recipient of the University Teaching Excellence Award at Rockhurst University. Jennifer, who is an associate professor in the Department of Psychology, was nominated for her work in integrating service learning into the psychology curriculum and for developing a new course, Cross Cultural Perspectives on Adolescence.

Angie Calvin, M.S. '12, was accepted into the doctoral program in educational psychology (human development area) at the University of Wisconsin-Madison for the fall 2012.

COGNITIVE AND BEHAVIORAL SCIENCES (CBS)

by Dawn McBride

The CBS sequence continues its history of hosting a wide range of interesting speakers. In spring 2012, visitors included Takahiro Higuchi from Tokyo Metropolitan University. Higuchi's visit was sponsored by the Institute for Prospective Cognition. In fall 2011, speakers included Larissa Samuelson from the University of Iowa, Angela Grippo from Northern Illinois University, Jon Pettibone from Southern Illinois University-Edwardsville, Mark McDaniel from Washington University, and Michael Spivey from the University of California-Merced, who was also sponsored by the Institute for Prospective Cognition.

These presentations provide wonderful intellectual engagement for both faculty and students and allow students to meet possible future Ph.D. advisors and to network with

other researchers. Speakers and topics for the CBS sequence can be viewed at Psychology.IllinoisState.edu/CBS/prosem.shtml. We are grateful for financial contributions from the department, college, and University, which make these visits possible. If you are interested in contributing to the CBS speaker fund to help us continue these engaging visits, contact Patty Foltz at pafoltz@ilstu.edu

Alumni spotlight: Where are they now?

After Jorie Colbert-Getz '03, M.S.'05, graduated from the CBS sequence, she went on to receive her Ph.D. from the University of Utah. She is currently assistant professor, Division of General Internal Medicine, and director, Office of Assessment and Evaluation, at the Johns Hopkins University School of Medicine.

"My experience at ISU has greatly influenced my work in medical education," Colbert-Getz said. "I have all my notes and homework assignments from the research and statistics courses



Jorie Colbert-Getz got married to Carlton Getz in 2010. The photo is from a trip she and her husband took last summer to Uganda where she was invited to provide two days of faculty development on medical school programs and course evaluation.

in my office and routinely refer back to them. I am still using some of the worksheets from PSY 138 for teaching my graduate students. The most valuable ISU experience for me was presenting statistical concepts, especially teaching the subject as a graduate assistant. I sit on many committees at Hopkins and it is not enough to just provide a report to the committee. I have to be able to explain statistical results to faculty with little or no background in the area. Additionally, the field of medical education is in need of rigorous research design and analysis so I think I have been well prepared with the course work from the CBS and quantitative programs to help advance the field."

The CBS sequence has recently developed a Facebook page to help everyone keep in touch and hear about what's happening at Illinois State. Please friend the page and update us on where you are now!

INDUSTRIAL/ORGANIZATIONAL-SOCIAL PSYCHOLOGY (I/O-S)

by Kim Schneider

Recent graduates

Congratulations to the newest I/O-S alumni on their successful thesis defenses in the past year

Akiko Matsuo, M.A. '12, (April 2012; Eros DeSouza, chair)—"Narcissistic Anger Provocation in Threat-Anticipating Situations with Negative Feedback or No Feedback"

Mackenzi Harmon, M.S. '12, (July 2012; John Pryor, chair)—"The Influence of Stigmatized Employees on Organizational Reputation"

David Daly, M.S. '12, (October 2012; John Binning, chair)—"Values as Predictors in Personnel Selection: Organization-Specific Value Congruence Versus General Work Value Congruence"



I/O-S sequence represented at Alumni Day 2012

Welcome to the new I/O-S master's candidates

This year we welcomed an incoming class of four students: Anthony Czesak '12, Amanda Fisher from Drury University, Andrew Salmonson '12, and Aaron Whitely from the University of Florida. Four second-year I/O students are also continuing in the program: Phil Drazewski, Mike Hoffman, Joseph Morrison, and Josh Rohlfs '11.

Alycia Hund receives Outstanding Service Award

by Phil Skurski, CAS News

Associate Professor Alycia Hund received the 2012–2013 College of Arts and Sciences Outstanding Service Award.



"I congratulate the recipients of this year's Outstanding Service Awards," college Dean Gregory Simpson said. "In addition to being excellent teachers and researchers, the service they have provided helps make Illinois State the great place that it is."

Hund has been elected to the Council on General Education (CGE) and has served as chair for the committee for three years, during which she has taken the lead in interpreting findings from the Institutional Artifact Portfolio assessment project, including writing annual articles that appear in *Progressive Measures* each spring. She has served on a number of panels connected with general education program and was a part of the recent General Education Task Force.

Within her department, Hund launched the Child Research Participant Database, which includes contact information for potential participants for a variety of research projects in the department and is a major resource for the faculty. Also, she has served on the Research Committee since her arrival on campus. Hund has served on the department's Curriculum Committee, the Institutional Review Board Executive Committee, the Academic Senate, and the Foundations of Excellence Task Force.

At the national level, she has reviewed grant proposals for the National Science Foundation and many research journals. Currently, Hund serves on the editorial board for the *Journal of Experimental Child Psychology* and as a member of the program committee for the Midwestern Psychological Association.

New faculty profile: Eric Wesselmann

by Phil Skurski, CAS News

Eric Wesselmann '03, M.A. '05, has returned to the Department of Psychology, this time as an assistant professor. Wesselmann holds a B.A. in psychology and a master's degree in industrial/organizational-social psychology from Illinois State University, and



a Ph.D. in personality/social psychology from Purdue University, where he previously taught as a continuing lecturer.

Wesselmann's research focuses on social influence, stigma, ostracism and exclusion, as well as religion and spirituality. He

has articles published in multiple journals, including the *Journal of Individual Psychology*; *Group Dynamics: Theory, Research, and Practice*; *Psychological Science*; and the *Journal of Experimental Social Psychology*.

Wesselmann enjoys spending time with his wife, Amanda; son, Isaiah; and daughter, Celeste. If he finds spare time, he plays video games, reads comic books, and dabbles in electronic music.

New faculty profile: Alexandra Ilie

Alexandra Ilie is a new member of the Department of Psychology. The assistant professor received her



Ph.D. in industrial-organizational psychology from the University of South Florida. She was born in Romania where she studied at the University of Bucharest.

Ilie's research interests include occupational health psychology, extra-role work behaviors, and cross-cultural psychology. Her research has been published in journals such as *Applied Psychology: An International Review*, the *European Journal of Psychological Assessment*, and the *International Journal of Selection and Assessment*. In her spare time she enjoys reading, watching movies, listening to music, and traveling.



I/O reunion at the annual SIOP conference

We had a great turnout for the annual I/O reunion happy hour at SIOP in San Diego in April 2012! Our group met at Urban Bar & Grill in the Gaslamp Quarter for appetizers and drinks after a long day of panels and workshops.

Please continue to check our ISU I/O Facebook group for updates on the program and information about job opportunities within our ever-expanding network. Email Kim Schneider at ktschne@ilstu.edu if you are interested in the Facebook group but have not yet joined.

QUANTITATIVE PSYCHOLOGY

by Matthew Hesson-McInnis

New students

F. Andrew (Andy) Eichler joins us as a new quantitative sequence student from Benedictine University. In addition, Anthony Czesak and Amanda Fisher have joined the sequence as dual-sequence students, both of whom are also in the I/O-S sequence.

Alumni updates

Ashley Niemczyk, M.S. '12, is currently working for the Anoka-Hennepin School District Research, Evaluation, and Testing department as a data analyst.

Kevin Wallpe has entered the Ph.D. program at Kansas State University.

Brooke Hunter, M.S. '11, is currently working as a research associate at the Lighthouse Institute, a division of Chestnut Health Systems. Hunter's thesis, "Effect of the Adolescent Community Reinforcement Approach on Criminal Behavior in Substance Using Adolescents," was nominated by the Department of Psychology for the James Fisher Outstanding Thesis Award.

Faculty publications

Garrison, A. M., Kahn, J. H., Sauer, E. M., and Florczak, M. A. (2012). "Disentangling the Effects of Depression Symptoms and Adult Attachment on Emotional Disclosure." *Journal of Counseling Psychology*, 59, 230-239.

Kahn, J. H., Hucke, B. E., Bradley, A. M., Glinski, A. J., and Malak, B. L. (2012). "The Distress Disclosure Index: A Research Review and Multitrait-Multimethod Examination." *Journal of Counseling Psychology*, 59, 134-149.

Kahn, J. H., Jones, J. L., and Wieland, A. L. (2012). "Preservice Teachers' Coping Styles and Their Responses to Bullying." *Psychology in the Schools*, 49, 784-793.

Faculty presentations

Hogue, J. D., Crimmins, A. M., and Kahn, J. H. (October 2012). "I think I like What I'm Feeling: A Pilot Study Examining One's Liking of Happy and Sad Songs." Poster presented at the American Music Therapy Association 2012 Conference in St. Charles.

Garrison, A. M., Kahn, J. H., and Sauer, E. M. (August 2012). "Emotional Avoidance and Rumination Mediate the Relation Between Adult Attachment and Disclosure." Poster session presented at the 120th Annual Convention of the American Psychological Association in Orlando, Florida.

Kahn, J. H., and Cantwell, K. E. (August 2012). "Social Support and the Disclosure of Everyday Unpleasant Emotional Events." Poster session presented at the 120th Annual Convention of the American Psychological Association in Orlando.

Kahn, J. H., Jones, J. L., and Wieland, A. L. (February 2012). "Preservice Teacher Coping Styles and Their Responses to Bullying." Poster session presented at the National Association of School Psychologists 2012 Annual Convention in Philadelphia.



DeGarmo Hall

Faculty news

Professor John Binning was recently appointed a principal reviewer for the *Journal of Applied Psychology*, one of the top I/O psychology journals. At the annual Society for Industrial & Organizational Psychology Inc. (SIOP) conference this year, he was an invited facilitator for an interactive session on "Structured Interviewing" and he was an invited "Teaching Workshop"



panelist for the Junior Faculty Consortium. Binning also chaired SIOP's Distinguished Teaching Contributions Committee.

Congratulations to Assistant Professor Eric Weselmann and his wife, Amanda (Burke) '04, on the birth of their daughter, Celeste, October 10, 2012! The couple also has a 2-year-old son, Isaiah.

Dan Ispas receives University Research Initiative Award

Assistant Professor Dan Ispas was awarded the University Research Initiative Award for 2012. The award was established by the University Research Council in 1984 as a way to recognize key individuals involved in research. Initiative Awards are bestowed to those beginning their academic carrier while Outstanding College and University Awards are given to those who have outstanding levels of research among their peers.





ILLINOIS STATE UNIVERSITY

Illinois' first public university

Department of Psychology

Campus Box 4620

Normal, IL 61790-4620

YES, MY GIFT MATTERS.

GIFT DESIGNATION

PSYCHOLOGY (#625257)

PAYMENT OPTIONS

OPTION 1: Check. A check for my gift of \$_____ payable to Illinois State University Foundation is enclosed.

OPTION 2: Credit Card:

VISA MASTERCARD DISCOVER AMERICAN EXPRESS

A single gift in the amount of \$_____

A recurring gift in the amount of \$_____ ending on ____/____/____ (month/day/year), to be paid: monthly quarterly semiannually annually

Name on card _____

Expiration date _____

OPTION 3: Make a gift online at IllinoisState.edu/Giving.

DONOR INFORMATION

Name(s) _____

University ID (if known) _____

Address _____

City _____

State _____

ZIP _____

Preferred email address _____

Preferred phone number _____

(____) _____ mobile home

FURTHER GIVING INFORMATION

_____ I (and/or my spouse/partner) work for a matching gift company:

_____ I would like more information on including Illinois State University in my estate plans

_____ I have already included the University in my estate plans.

Office use only: AG00000000 2013002462 43

Please mail this form to the Illinois State University Foundation, Campus Box 8000, Normal, IL 61790-8000.

This document is available in alternative formats upon request by contacting the Department of Psychology at (309) 438-8651. An equal opportunity/affirmative action university encouraging diversity. UNIVERSITY MARKETING AND COMMUNICATIONS 13-0458 printed on recycled paper