



# PSI CHI AND SPA SPRING 2026 SCHEDULE



**1/22: INTRODUCTION MEETING**

**2/5: VALENTINE'S DAY SOCIAL**



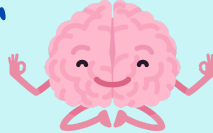
**2/19: DAY IN THE LIFE OF A THERAPIST**



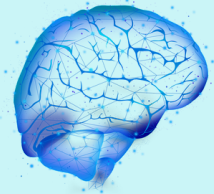
**3/5: GRADSCHOOL WORKSHOP**



**3/19: MENTAL HEALTH FOR COLLEGE STUDENTS  
w/THE BODY PROJECT**



**4/2: NEURO NIGHT w/GUEST SPEAKER**



**4/16: STRESS FREE NIGHT w/THERAPY DOGS and EXEC  
ELECTIONS**



**4/26: BANQUET!!!**

**4/30: SPRINGTIME SOCIAL!**



**Where? Schroeder 130  
What time? 6:30-7:30pm**

**Questions? Contact Us!**

**SPA President: Mackinze Carter, mmcart3@ilstu**

**PsiChi President: Taylor Daker, trdaker@ilstu.edu**

**RSO Advisor: Jaina Rollins, jabran3@ilstu.edu**

# **Psi Chi - International Honor Society in Psychology**

- **Attend all Meetings**
  - **Complete 3 volunteer/fundraising hours**
  - **Lifetime fee of \$55 (includes t-shirt, SPA admittance, National Psi Chi Certificate of Admission, & graduation cord)**
  - **\$5/semester fee**
- 
- **At least 5 quarters of college attendance**
  - **At least 1 semester at ISU specifically**
  - **At least 9 credit hours of PSY courses complete**
  - **Must be admitted to Major or Minor in PSY**
  - **Overall GPA of 3.0**

## **SPA - Student Psychology Association**

- **Attend all Meetings**
- **Complete 2 volunteer/fundraising hours**
- **Fee - \$15/1st semester, \$5/semester for continuing semesters**
  - **Includes t-shirt!**

### **Requirements to Join:**

- **Interested in learning more about psychology!**